



# Capability Statement

Delivering high quality health,  
safety, environmental, wellbeing,  
quality and risk talent.

Resource different.





## About Us

Established in 2008, edenfx HSE quickly became the leading recruitment specialist in Health, Safety, Environment, Quality, and Risk management. In 2024, edenfx HSE was strategically acquired by HSE Global Ltd - an internationally recognised leader in consulting, HS risk management and leadership performance.

This partnership enables us to deliver comprehensive, integrated workforce solutions, significantly enhancing client value across Asia-Pacific and beyond.

**[www.edenfxHSE.com](http://www.edenfxHSE.com)**



## Our Specialist Offerings

We provide highly customised recruitment and workforce solutions, supporting diverse industries including manufacturing, construction, mining and resources, renewable energy, transport and logistics, healthcare, utilities, government, and the public sector.

# Our **Key Services**

**Providing people solutions for permanent fixed-term and contracting appointments. At all levels, all disciplines and all industries.**

## **Permanent and Fixed-Term Recruitment**

- Rigorous selection processes to match top talent from frontline to executive roles.
- Complete alignment with your organisation's culture and strategic goals.

## **Executive Leadership Search**

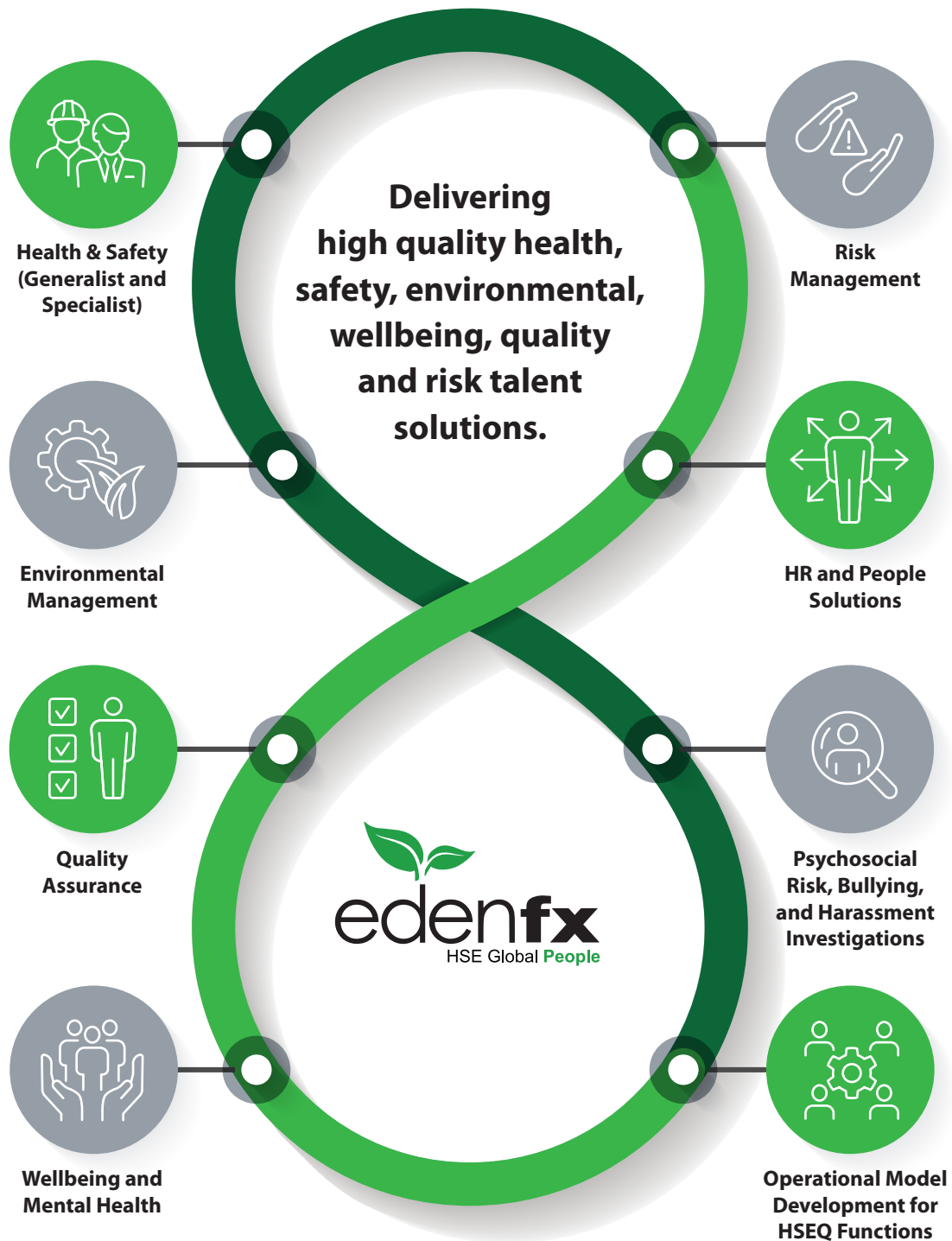
- Tailored high-level recruitment for strategic leadership positions such as Directors, General Managers, Vice Presidents, and Senior HSEQR leaders.
- Deep understanding of organisational objectives, ensuring candidate alignment and organisational fit.

## **Flexible Contracting Solutions**

- Agile workforce model providing specialist expertise for project-based roles, peak periods, ISO accreditation, shutdowns, strategic reviews, and independent investigations.
- Business as usual backfill whilst recruiting.
- Streamlined compliance management for quick and efficient mobilisation.



# Comprehensive areas of expertise in recruitment and people solutions.





# Why choose edenfx HSE Global People?

## Global Capability, Local Expertise

Extensive networks and market knowledge, blending international best practices with local insights.

## Deep Sector Expertise

Specialised recruiters deeply embedded within industry sectors, ensuring tailored solutions that drive operational excellence.

## Proven Operational Excellence

Consistent track record delivering quality recruitment outcomes, operational agility, and exceptional candidate placements.

## Client-Centric, Ethical Approach

Dedicated to long-term relationships founded on transparency, integrity, and mutual respect, focusing solely on client success.

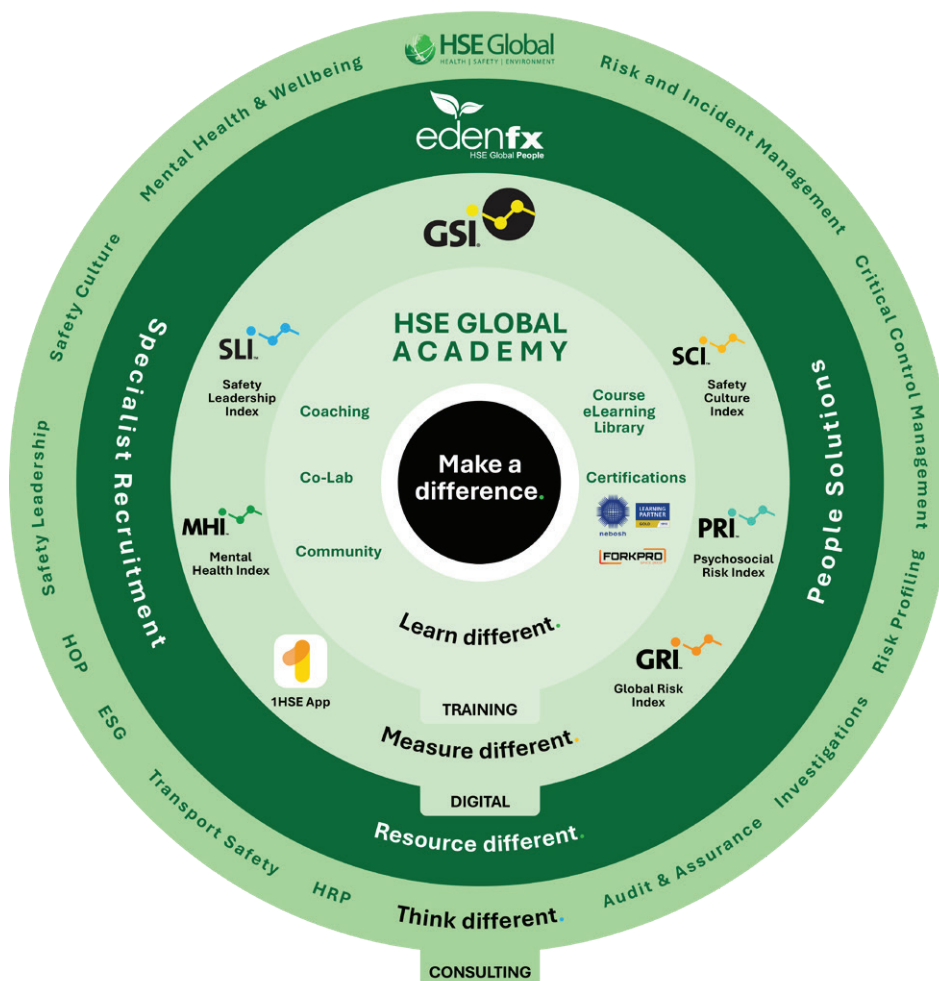


*Operational excellence is not just a goal – it is our standard. Our commitment to personalised service ensures a high-quality, positive experience for all.*



## Our Unique Advantage as part of the **HSE Global Group**

Being a member of the HSE Global Group provides unparalleled access to world-class consulting, innovative digital platforms, and advanced learning and development programmes. This integration allows us to offer strategic, end-to-end workforce solutions, significantly enhancing your organisation's safety, wellbeing, ESG, and operational effectiveness at scale.



## Commitment to Excellence

Every engagement with edenfx HSE Global People is defined by our unwavering commitment to excellence, strategic partnership, and impactful talent placement. We work tirelessly to ensure our clients achieve sustainable and safe operational performance through their greatest asset—their people.

**www.edenfxHSE.com**



# Our Values



## Family First

We treat every client, candidate, and contractor as part of our extended family. We believe in building genuine, long-term relationships based on trust, care and respect – because people are at the core of what we do.



## Lead the Way

As industry specialists, we set the standard in health, safety, and environmental recruitment. Our expertise, proactive approach, and deep industry networks allow us to connect the right people with the right opportunities, helping organisations build high-performing teams that make a real impact.



## Think Sustainably

We are committed to creating lasting value by delivering workforce solutions that are strategic, ethical and forward-thinking. By understanding our clients' long-term goals and matching them with the right talent, we help future-proof businesses and careers.

Resource different with  
**edenfx HSE Global People.**





The **edenfx HSE Global People** team are a high performing group of recruitment professionals, dedicated to supporting appointments at all levels within all sectors across Asia Pacific and beyond.

---

## Connect with Us

Find out more about how edenfx HSE Global People can strengthen your workforce capabilities:

**New Zealand Head Office:** +64 9 424 8367

**Australia Head Office:** +61 2 8089 2451

**US Head Office:** +1 (907) 931 6342

**Email:** [info@edenfxHSE.com](mailto:info@edenfxHSE.com)

**[www.edenfxHSE.com](http://www.edenfxHSE.com)**

## Resource different.